



SANTA SUSANA MOUNTAIN PARK ASSOCIATION

Dedicated to the Preservation of the Santa Susana Mountains and Simi Hills

A Non-Profit 501(c)(4) Organization

Incorporated August 31, 1971

Website: www.ssmpa.com

E-mail: mail@ssmpa.com

January & February 2011 Newsletter

Volume 41/1&2

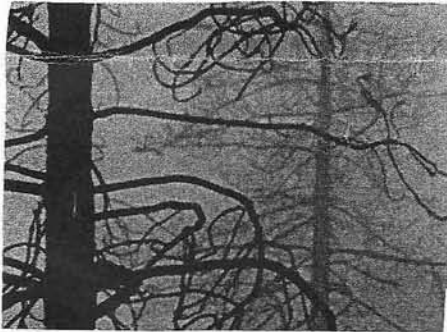
Community Meeting: January 17, 2011: 7:15 pm

(Community Meetings are Free to SSMPA Members and Public)

Rockpointe Clubhouse: 22300 Devonshire Street, Chatsworth CA 91311

(On the south side, one block before entrance to Chatsworth Park South)

RECOVERY! ANGELES NATIONAL FOREST AFTER THE STATION FIRE



Presenter: Corina Roberts, Writer and Photographer, Founder of Redbird, a Native American and Environmental Non-Profit Association

Roberts has spent the last year documenting the recovery of the Angeles National Forest from the Station Fire, the largest wild land fire in the history of L.A. County. The Forest Recovery Project examines the role of fire in healthy eco-systems and the human relationships to fire management, past and present. Roberts amassed a collection in excess of 20,000 images from the forest's three primary biomes: Chaparral, riparian, and hardwood/conifer forests. View sample images from the Forest Recovery Project: www.redbirdsvision.org

Community Meeting: February 21, 2011: 7:15 pm

SSMPA Members' Photo Presentation Night

Led by: John Luker, Vice President SSMPA, Photographer Extraordinaire!

Brought back by popular demand!

All SSMPA Members are invited to present their photos (up to eight) featuring the Santa Susana Mountains-Simi Hills region for presentation. Photographers will narrate. Photo subject ideas ... area natural wonders, animals, birds, people in activities (hiking, cleaning up trails, events.) Please submit your photos (jpegs) in advance to John: jcluker2@yahoo.com

SSMPA MISSION: *Our mission is to serve as stewards of the Santa Susana Pass State Historic Park (SSPSHP) and surrounding areas and to continue to preserve and protect habitats for plants and animals native to the location, unique geological formations, and sites of ethnological, archaeological, and historic interest. We also seek to provide passive recreational and environmental education opportunities, support the acquisition of new public parks, open space and conservation easements, expand existing natural parks, and to participate in the planning of park infrastructure and programs.*

Save this date!

MARCH, 21: Community Meeting: Presenter: Kathleen Semple Delaney, PhD, Ecologist, NPS Researcher, Santa Monica Mountains National Recreation Area. Delaney will present a joint project study: "A Rapid, Strong and Convergent Genetic Response to Urban Fragmentation in Four Divergent and Widespread Vertebrates."

Looking Back at SSMPA Activities/Accomplishments in 2010

Santa Susana Pass State Historic Park (SSPSHP): In 2009 SSMPA Board Members banded together to save our park from extinction due to state budget cuts. Working with California State Parks, Karma Graham, Lee Baum, and Jennifer Dandurand, SSMPA Board Members and Volunteers continued through 2010 to be the watchful eyes protecting the park from vandalism, graffiti (major cleanup) and arson. The volunteer hours and dedication far exceeded expectations. This year, land was cleared and a Visitor's Center has been put in place! Utilities need to be connected but there is progress! A special event is in the planning stages to honor the volunteers and leaders on Saturday, January 29, 2011. New volunteers are welcome, contact either John Luker (jcluker2@yahoo.com) or Teena Takata (teena@besttax.com).

SSPSHP Volunteers have contributed in 2010: A whopping 3,637 Hours!!!

Santa Susana Field Lab (SSFL): Meetings, tours, meetings, tours, and research and studies, hours that are difficult to calculate contributed by SSMPA Board Members on the clean up of SSFL. The involvement of SSMPA Board Members in Boeing/NASA/DOE's clean up of the site contamination is a complex issue and we are serving the community by having Board Members contributing their time as part of the DTSC Public Participation Group. It is the long-term goal of SSMPA, keeping with our Mission, to make this region an open space-parkland as a crucial link in the Rim of the Valley Wildlife Corridor after clean up is completed.

Rim of the Valley Corridor Special Resource Study: A bill passed Congress and is in the Department of Interior for consideration of annexing the Simi Hills, Angeles National Forest, San Gabriel Mountains, with the Santa Monica Mountains National Recreation Area as a possible corridor for protection of wildlife habitat, linkages between open space areas; completion of the Rim of the Valley Trail system; preserving recreational opportunities for a variety of users and protection of threatened or endangered species and plant communities. Members have participated in the first round of Public Meetings.

Chatsworth Nature Preserve (CNP): From the time SSMPA founder, Janice Hinkston, formed SSMPA over 30 years ago and all the years following, SSMPA has been the stewards of the CNP. This is the only open space nature preserve in the Los Angeles County. From the Canada Goose Project, Audubon Society and Earth Day events, SSMPA is actively involved in the preservation of this site. There are changes on the horizon from exclusive Dept. of Water ownership and SSMPA is participating in the transition stages.

Responsible Development: Led by Teena Takata and Warren Stone, community meetings and involvement with residents and local officials to ensure residential building plans are responsible, meeting safe fire road access, consideration for building in unique environmental-geological regions, traffic conditions, all aspects of development in our foothills and mountains.

Community Outreach: Leading interpretative hikes for the community, photo hikes, participation in community clean ups, Pioneer Days, Garden Party, Canada Goose Project, Earth Day, donation of SSMPA T-shirts to PALS a community program for teens.

Protecting Oak Woodlands: SSMPA is in alliance with Oak Woodland Habitat Conservation Strategic Alliance to preserve and expand California native oak woodlands. In keeping with our dedication, we are working to prevent the destruction of eleven acres of oak woodlands in the foothill of the San Gabriel Mountains.

Community Lectures/Presentations: A recap of our Presenters for 2010: John Luker, Photo Night, Brendan Galipeau, Native Plants and Home Gardens; Torin Dunning, Tree People, Creating a Green Canopy for Greater Los Angeles; Jack Unger/Teena Takata/John Luker, Grand Vision for the Northwest San Fernando Valley, Graywolf and Gilbert Unzueta, Chumash/Native American Leaders, Jerry England, Author/Historian of Western Films produced in our region, Paul Costa/Boeing and Allen Elliott/NASA and "Blast off with Rocket History" at the SSFL.

Special Recognition: Mitch Englander, Chief of Staff, Council District 12 and Rosemary White, PhD, Sierra Club-Angeles Chapter, working with Jack Unger blocked a planned Marine Helicopter activity in the Chatsworth Nature Preserve. Englander is currently working with John Luker on the preservation of CNP as an open space/wetlands nature preserve.

In Memory of our 2010 losses: Janice Hinkston, founder of SSMPA; Ronald Schaffer, Leader and Friend, L.A. District California State Parks; Dorian Keyser, former SSMPA Board Member President; Mary Gorman, founding member of SSMPA.

Newsletter and Website

Keeping Members and the Public informed of all our activities is a full-time job done without pay. Special thanks to Chris Beauvais (Newsletter Editor) and Warren Stone (Website Host) Applause – Applause!

John Luker, Vice President, Board of Directors

He's here, he's there, he's everywhere! John Luker gives new meaning to the word omnipresent. He gathers into his octopus network of conservationists the spirit to carry the banner of protecting and preserving the Santa Susana Mountains-Simi Hills. You can find him counting Canada Geese at 6 am, later in the day meeting with a City, State or National Park officials to work on any and all projects involving issues to improve, open, annex parks for people and animals, and later in the evening serving on community meetings. Weekends: He's often leading hikes with camera in hand. His energy and contributions to SSMPA are beyond the call of duty.

SSMPA Board Members

Board of Directors all contribute hours of time with lousy pay (zero) receiving the simple reward of serving our community and the future world where a place for humans, animals and habitat co-exist in the natural and beautiful surroundings. Each BOD contribute their own special talents ...

Jack Unger, President: Like Luker, spends many hours with community members and guides our passionate commitments on the right pathway.

Teena Takata, Secretary: Not only takes minutes of board meetings, she is involved with many activities that require hours of devotion, from helping set up the volunteer program, attending community meetings, co-hosting SSMPA lectures, hike leadership, nature photographer, and numerous other projects.

Diana Dixon-Davis, Treasurer: Keeps track of our bank/savings accounts, tax reporting, membership, involved with political activities, both Chatsworth Council and PTA and helps with hosting SSMPA community meetings.

Warren Stone: Web Master, community representative, newsletter mailings, whatever is needed.

Carla Bollinger: Back up Secretary, Newsletter Writer, Program Chairperson, community representative

Chris Beauvais: Newsletter Editor with archaeological background.

New Board Members: Robert Dager: Volunteer Park Leader and community representative

Dr. Elizabeth Harris: Led SSMPA on the challenge of revisiting our Mission

Statement and Vision, works on community/social network outreach projects and grants.

SSPSHP Volunteers and Leaders ... Save the date – January 29, 2011 And Celebration of SSMPA's 40th Anniversary

Plans are in the works for a 3.5 – 4 hour Volunteer Training Session for new and former volunteers. The training session and awards/dinner plans are still in the planning stages. For updates: See our website: www.ssmpa.com The training session will be held at Los Encinos State Historic Park the afternoon of January 29. Jennifer Dandurand, Park Interpretive Specialist, with SSMPA, will be providing final plans for time and location of the award presentation and SSMPA's 40th Anniversary Celebration – dinner which follows the training session.

Hikes in the Santa Susana Pass State Historical Park and the Local Area

Hikes are canceled if it rains. There are no hikes on holidays. Bring water, snack, lug soles shoes, hat, and sunscreen. No hiking in the summer-early fall due to hot weather.

**Welcome Walks are organized
and led by SSMPA.**

**Please confirm, when requested,
with the leaders indicated.**

**"WELCOME WALKS"
AT SANTA SUSANA PASS
STATE HISTORIC PARK**

Starting the 2nd season
Hike in the Park

History, Wildlife and Heritage
2011 Hike and Graffiti Schedule:
Hikes: 2nd Saturday of the month
Graffiti Abatement: 4th Saturday of the month

**Please note that the starting time for the graffiti abatement has been
changed to 9:30.**

STAGECOACH TRAIL

Stagecoach Trail: Meet 9:00 am. 3rd Sunday of each Month, months November through June. No hiking in the summer-early fall due to hot weather. Interpretative hike into history of Santa Susana Pass State Historic Park. Hike is a 3 to 4-1/2 mile loop (400' gain) up the historic Stagecoach Trail. Directions: From Topanga Cyn. Blvd., turn west on Devonshire St., to Larwin Avenue about 200 feet south of Devonshire on right. Meet at park entrance on Larwin Avenue. Park on street. Leader: Lee Baum (818-341-1850/ Sierra Club-Santa Susana Mtns. Task Force Outing.)

SSMPA E-MAIL NEWSLETTER IS COMING!

We are compiling our member's e-mail addresses to begin in 2011 sending out our newsletter via e-mail. The printed copies will still be printed for members not having access to the Internet. Please send to this address your e-mail address: carlamamay@aol.com

SSMPA MEMBERSHIP

Many of our members have renewed their membership for 2010/2011 and we thank you! A number of members have also sent in "donations" above and beyond their membership cost – a double thank you!! A good portion of SSMPA membership are Life Members – triple thank you!!! SSMPA has spent our funds wisely. All funds spent over \$250.00 are proposed at general meetings for membership approval. In the past, this usually has been for donations such as \$500.00 to SAVE Chatsworth in the effort to protect against further development in the foothills, or purchase of property parcels in strategic areas of the Santa Susana Mountains-Simi Hills to continue providing to the general population access to hiking and bike trails and for protection of wildlife habitats. If you are a Life Member and can afford to contribute for the continued effort to preserve and protect our region, donations are gratefully accepted!

Membership dues: () \$15.00 for individuals () \$20.00 for a Family () \$30.00 for a business or Organization () \$150.00 for Individual Life Membership () \$200.00 for a Family Life Membership. Make your check payable to SSMPA and mail it to: SSMPA, P.O. Box 4831, Chatsworth CA 91311 Please be sure to fill in the information as follows:

Name(s) _____ E-Mail _____

Address _____

Phone: _____ Special interests or skills you have and if you would

Like to volunteer for any activities: _____

Thank you for your support!

Santa Susana Mountain Park Association &
Foundation for the Preservation of the Santa Susana Mountains
P.O. Box 4831
Chatsworth, CA 91313-4831

ADDRESS SERVICE REQUESTED



Non-Profit
US Postage
Paid
Canoga Park, CA
Permit No. 848

Oaks

by: Carla Lauren Bollinger

Downpour for days,
seeps deep through roots.
Mist and fog spread like butter
in valleys and up hillsides.
Sun splits the veil of dawn –
expose leaves dripped in frost.

Soon daylight grows long,
dry wind whips across meadow.
Oaks' offspring fall from curlicue
branches, a thunderous descent
in woodlands for squirrels
to gather and store.

Humans rest under dappled light,
shade cools the brow –
stories old and new are shared
as Jay squawks and eagle builds nest.

After all chores are done,
Earth's pavilion is moonlit –
oak savannahs in shimmering petticoats
waltz along the ridge.

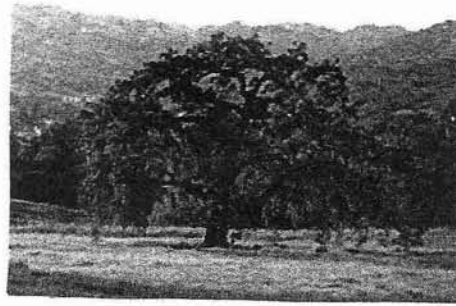


Photo: John Luker



Santa Susana Mountain Park Association
Website: SSMPA.com E-Mail: Mail@SSMPA.com

Jack Unger - President
John Luker - Vice President
Teena Takata - Secretary
Diana Dixon-Davis - Treasurer
Jan Hinkston, Founder/Honorary Member

Members-at-Large: Carla Henry (and back up sec'y)
Warren Stone (Web Master)
Chris Beauvais (Newsletter Editor)
Reid Bogert
Robert Dagers
Dr. Elizabeth Harris