

## October 2002 Newsletter

### When Chatsworth Lake Was a Lake

A Little Bit of History of the Chatsworth Nature Preserve

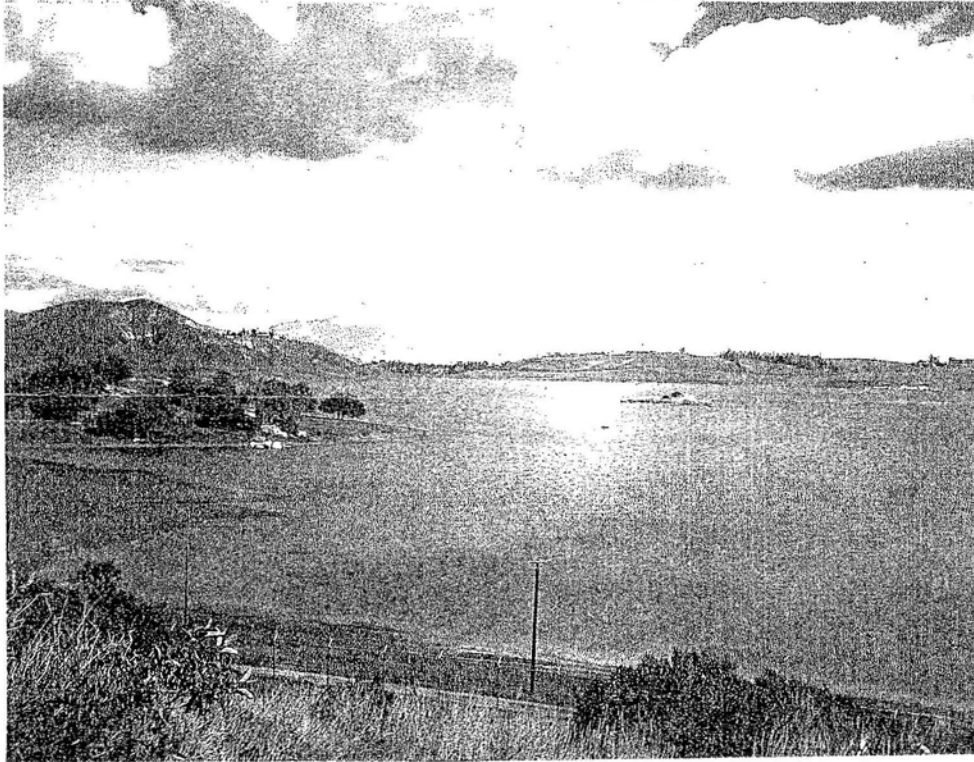
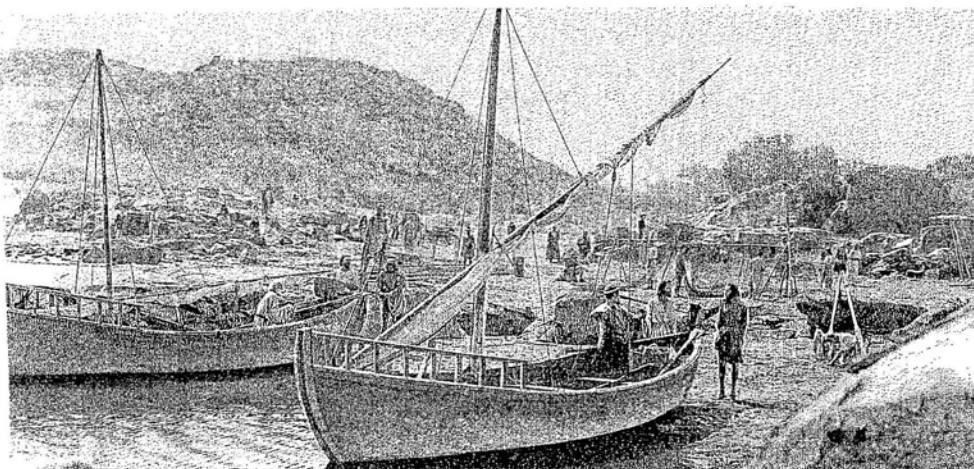


Photo taken in 1960 by Tony Mayr from the west end of Chatsworth Lake looking east.



In the '50s the Chatsworth Reservoir played the role of the Sea of Galilee for a movie.

In late December 1913, the LA Daily Times ran the following information: "SCENIC SITE OF MOUNTAIN LAKE. Chatsworth Reservoir offered to Water Board. Voters to be asked to authorize purchase of picturesque tract of land for impounding water from the Aqueduct. Arbitrators to fix value."

The City bought the property from Mrs. William Sesnon, daughter of the late B.F. Porter, for \$255,000. The basin provided the City with an additional storage area for surfeit water, which was now available from the Owens River Aqueduct. The water also allowed the cultivation of citrus, which eventually gave way to housing tracts and subdivisions in the SFV.

#### **SSMPA General Membership Meeting** **Monday, October 21, 2002**

Do you regret missing archaeologist Al Knight's last slide show presentation of local aboriginal rock art? Not to worry - Al's back! One of our favorite presenters with his wit and high energy, Al informs and entertains. This show will be a little different than the last. Don't miss it.

SSMPA General Membership Program meetings take place every 3rd Monday of the months during the months of September through November and January through May. Program meetings begin at 7:15 p.m. and generally conclude by 9:00 p.m. Location: Rockpointe Clubhouse, 22300 Devonshire, Chatsworth, on the south side, 1 block before entering Chatsworth Park South.

Members are invited to attend General Membership Program meetings and Board of Directors meetings. Board of Directors meetings take place at the Chatsworth Park South Visitors Center on the first Monday of the month at 7:30 p.m. Refreshments are served at program meetings. >>>>>

## Update on Ahmanson Ranch

The Ahmanson Ranch site, owned by Washington Mutual Bank, is located upstream from Surfrider Beach on the border of LA and Ventura counties. The proposed 3,050-home project on Ahmanson Ranch, which is just across the Ventura County line from Woodland Hills and Calabasas, was approved by Ventura County in 1992 but delayed by legal challenges and environmental issues. Most Los Angeles politicians and many Valley residents oppose it. LA Mayor Jim Hahn publicly called on Washington Mutual to abandon development on Ahmanson Ranch. "We are taking action to protect Southern California from this looming nightmare," said Mayor Hahn in his remarks at a gathering last June at the 101/405 Freeway interchange. "Every Angeleno, particularly those living right here in the Valley, can be assured that the full force of the City is committed to stopping this development once and for all," added Hahn. Mayor Hahn called the developer's environmental impact report (EIR) "inadequate and outdated" and demanded that a new, complete and current EIR be conducted. "The data they are using is 10 years old, and does not reflect the true impact that this luxury housing project would have on the surrounding communities and on the environment as a whole," said Hahn. "If the developer does not voluntarily comply with our request, we are prepared to seek all legal remedies available to us," added the Mayor. The Mayor joins the California Department of Fish and Game, the Regional Water Quality Control Board, the Santa Monica Mountains Conservancy, the US Fish and Wildlife Service, virtually every elected official in Southern California, hundreds of community groups and environmental organizations, as well as thousands of concerned citizens, in criticizing Washington Mutual's plan to build a 10,000-person luxury housing development in the middle of one of Southern California's last remaining open spaces. The development would also add 45,000 new car trips to the 101, PCH and connector roads.

Assemblyman Keith Richman, a Valley mayoral candidate, urges a new study on how the development would affect traffic. In August, Richman stated that he had withdrawn his support for the controversial Ahmanson Ranch mini-city and called for a new study of its effect on San Fernando Valley roadways. Richman asked Ventura County officials for a new study after concluding that old traffic projections are unreliable indicators of jams the project would cause on nearby roads. "I'm extremely concerned about the impact of the Ahmanson Ranch project on the surrounding communities," Richman said in an interview. "I'm withdrawing my support until I'm confident the traffic issues have been addressed and [can be] mitigated. We need to know what the true traffic numbers are."

Tim McGarry, a spokesman for Washington Mutual, said the bank still intends to break ground next year after Ventura County approves a new study about how to protect the threatened red-legged frog and the spineflower, which were discovered on the ranch in 1999.

Rally to Save Ahmanson Ranch is a non-profit, broad-based coalition of environmental groups, community and business leaders, homeowners associations, students, and concerned elected officials working to stop Washington Mutual's development of a 'new city' of 10,000 residents in the pristine Santa Monica Mountains.

What You Can Do: Visit [www.stopwashingtonmutual.com](http://www.stopwashingtonmutual.com). Call Rally to Save Ahmanson Ranch, phone: (805) 517-1224 or (818) 713-2624. Call Ventura County Supervisor Frank Schillo at (805) 373-2564 and ask him to save Ahmanson Ranch.



## 501(c)(3) and 501(c)(4) Non-Profit Entities: Why Two Organizations?

by Dorian Keyser

The Federal and California State governments clearly distinguish between 501(c)(3) and 501(c)(4) non-profit corporations. 501(c)(3) non-profit corporations and foundations are income tax exempt and contributors to them can deduct their contributions as a deduction from taxable income (i.e., they are tax exempt and tax deductible). However, 501(c)(4) non-profit corporations are tax exempt but contributions to them are not tax deductible since the corporation does not have a qualified "charitable" purpose.

The Santa Susana Mountain Park Association (SSMPA) is a 501(c)(4) non-profit corporation, which was organized in 1971. It is allowed to advocate/endorse/oppose legislation, ballot propositions and causes before political personages, entities, etc.

The Foundation for the Preservation of the Santa Susana Mountains (FPSSM) was organized in 1972 as a 501(c)(3) non-profit foundation by SSMPA members to provide an opportunity for individuals and organizations to make tax-deductible contributions to acquire and/or assist in the acquisition of properties. Most significant has been the Nichols property, which is now a part of the Santa Susana Pass State Historic Park and Chatsworth Park South.

Neither organization is allowed to spend money to take positions for or against individual candidates for public office.

New website of the UCLA Health & Media Research Group on research at Rocketdyne/Boeing Santa Susana Field Lab (SSFL):

[www.ph.ucla.edu/erg/](http://www.ph.ucla.edu/erg/)

The site includes important information on the SSFL background (worker health impact and media sampling studies) and a timeline for the SSFL UCLA Public Health Initiative activities.

### **Thank you for renewing your SSMPA membership:**

Amanda Welbourn, Virve Leps, Bob Galletly, Margaret Vernallis, Milt McAuley, Edith & Sam Roth, Lizzie & Michael Novotny, Charlene Vincent, Willis & Melba Simms, Patricia Milow, Shelley Birenbaum, Jeannette & Eugene Davis, Eleanore & George Rembaum, Cecelia Heppes, Jim & Liz Carlin, Jim Dekloe, Dorian & Dalia Keyser, Richard Klotz, Grant & Bea Samuel, Jon Lauritzen (now a life member), Janet Lazik, Cathy Holstand Robert & Maureen Cates.

### **Welcome to our new members:**

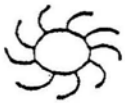
Mark & Vanessa Watters, Dali Shafer, Jack Unger and Alice Clagett.



Brush Rabbit

This newsletter is brought to you through the volunteer efforts of Reid Bogert, Jack Levin, Barbara Levin and Mary Gorman.

Susan Gerke, Editor



# UPCOMING HIKES

Hikers: Wear lugsoles & hat. Bring water, sunscreen and snack or lunch.



## Sierra Club Hikes

**Sun. 10/20 & 11/17 Stagecoach Trail Hike:** Interpretative hike into history in our Santa Susana Pass State Historic Park. Meet at 9 am for a 4 mi (700' gain) loop up the Stagecoach Trail. From Topanga Cyn Blvd, turn west on Devonshire and drive into Chatsworth Pk South to the 2nd parking lot by the Rec Bldg. Call Lee Baum at (818) 341-1850 for further info.

## Sierra Club/Santa Susana Mountains Task Force, Natural Science Section Hike

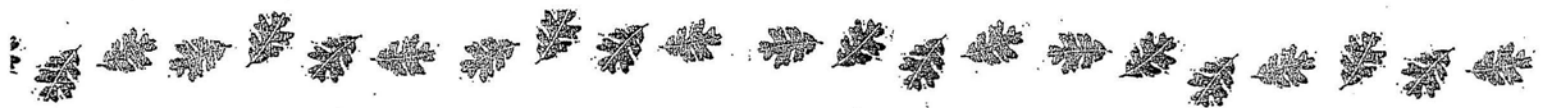
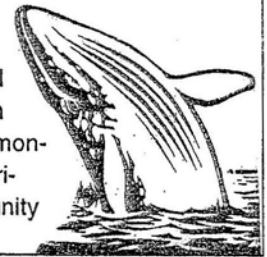
**Sun. 10/27: Devil Canyon/Halloween Potluck:** Easy-paced 5-mile, 200' gain naturalist led walk through a devil of a canyon where demonic Santa Ana winds howl and carve skeletal designs on sandstone walls. Learn witch plant is native and witch is not! Join us for stream hopping fun. Meet 9 am at the north end of Topanga Canyon Blvd. by the 118 Fwy. At the end of Topanga, turn right and park in dirt lot on Mojave Trail or turn left and park on Poema Pl. Wear sturdy, wettable shoes with good tread and bring water, utensils, cup, plate, and potluck item for 6. Leader: Judy Garris, phone no. (818) 346-7654.

To report acts of vandalism, illegal camping, digging, etc. in our Santa Susana Pass State Historic Park, hikers are encouraged to contact the park ranger station in Topanga Canyon at phone no. (310) 455-2465. Although the response will not be a fast one due to distance, a message can be left and your call returned. Our park rangers are Steve Bylin (Supervising Ranger) and Lee Hawkins.

*From SSMPA member and Canada Goose Project founder Dr. Rosemarie White: "Hello! I'd like to share this invitation to a wonderful event. Last year's event was such a special experience. Come, and bring your children!" (Wishtoyo is a Native American organization that utilizes traditional Chumash cultural values and practices to foster environmental awareness. The Ventura Coastkeeper, a member of the National Waterkeeper Alliance, is a community based, non-profit, membership organization dedicated to protecting, preserving and restoring Ventura County's marine habitat, coastal waters, and watershed.)*

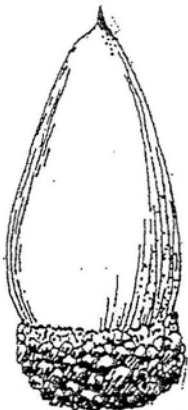
Dear Friends,

Haku! Wishtoyo Foundation and the Ventura Coastkeeper will host our Second Annual Rainbow Bridge Dinner Fundraiser Event on the evening of Friday, November 1st, 2002, at the Clarion Ventura Beach Hotel (Harbor Blvd. at Seaward off ramp, 101 Fwy.) in Ventura. Please plan to join us. We expect to have an even more successful dinner, auction and presentation than last year. Included will be a Chumash opening ceremonial blessing. Please save the date! We will honor Assemblywoman Fran Pavley for her environmental contributions, and the Chumash Maritime Association for their work for cultural preservation. Many noted community and state officials will be present. For more information, call (805) 382-4540.



## SANTA SUSANA MOUNTAIN PARK ASSOCIATION

WE INVITE YOU TO JOIN / RENEW / REJOIN S.S.M.P.A. (Please circle one.)



valley oak

Investing in the future of our communities and its resources is probably one of the best expenditures of our time and efforts. Return this cutoff with your contributions to help ensure our futures. Please make checks payable to SSMPA and send to SSMPA, P.O. Box 4831, Chatsworth, CA 91313-4831.

- Senior or Student (\$5.00)     Individual (\$10.00)     Family (\$15.00)
- Business or Organization (\$25.00)     Life Member (\$100.00)

Name: \_\_\_\_\_ Phone: \_\_\_\_\_  
 Address: \_\_\_\_\_ Fax: \_\_\_\_\_  
 City/State/Zip Code: \_\_\_\_\_ Email: \_\_\_\_\_  
 Special Interest/Expertise: \_\_\_\_\_



The purposes of the Santa Susana Mountain Park Association are the protection, preservation, restoration, and enhancement of the Santa Susana Mountains and Simi Hills as open space lands and wildlife corridors linking the Los Padres National Forest and San Gabriel Mountains, including the Angeles National Forest, to the Santa Monica Mountains; as habitats for plants and animals native to the Santa Susana Mountains and the Simi Hills; as locales of unique geologic formations; as sites of ethnological, archaeological and historical interests; to provide passive recreational opportunities and environmental education opportunities; and, to support the acquisition of new public parks, open space and conservation easements, the expansion of existing parks, participate in the planning of park infrastructure and programs, and support said programs. To find out how you can volunteer for SSMPA, come to our next general meeting and talk to us!



## For your calendar



### SSMPA BOARD MEETINGS

@ Chatsworth Park South Visitors Center:

Monday, Nov. 4, 2002, 7:30 p.m.

Monday, Dec. 2, 2002, 7:30 p.m.

### SSMPA PROGRAM MEETINGS

@ Rockpointe Clubhouse:

Monday, Oct. 21, 2002, 7:15 p.m.

Monday, Nov. 18, 2002, 7:15 p.m.



Western Kingbird

About this newsletter: If you have comments or would like to submit an article for publication in this newsletter, write to SSMPA, Attn: Newsletter Editor, P.O. Box 4831, Chatsworth, CA 91313-4831.

Please note the renewal date on your label and send in your dues  if you wish to continue your SSMPA membership and receive the newsletter. If you are current with your dues, kindly disregard this notice. If you are a Life Member, we thank you and invite your continued support with periodic donations to help meet the costs of producing this newsletter.



Santa Susana Mountain Park Association &  
Foundation for the Preservation of the Santa Susana Mountains  
P.O. Box 4831  
Chatsworth, CA 91313-4831

ADDRESS SERVICE REQUESTED

Non-Profit  
US Postage  
Paid  
Van Nuys, CA  
Permit No. 761

LIFE Member  
Nancy Razanski  
22149 James Alan Circle  
Chatsworth CA 91311-2051