

CLEAR THE STREETS! LOCK UP THE WOMEN AND CHILDREN!  
HIDE YOUR HORSE AND WALLET! THEY'RE COMING!!!

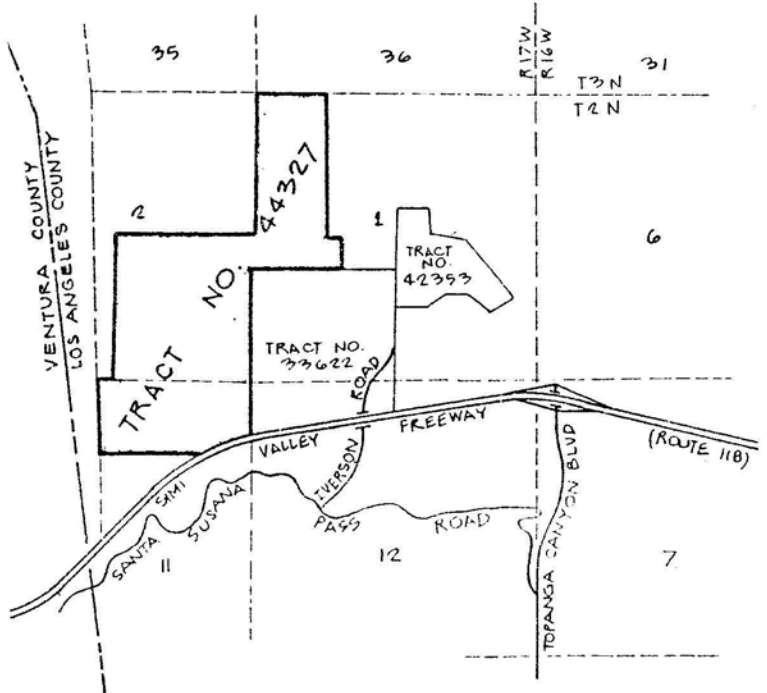
Well, the developers are at it again! Kilmer, the man who gave us Indian Springs Estates among others, now wants to develop tract no. 44327 to the west (see map). Among some of the proposed developments he has come up with, to enhance and beautify the Santa Susana Mountains, are:

- Obliteration of a vernal pool, a habitat for numerous flora and fauna (some rare and endangered)!
- Building an access road up a creekbed (that ought to be fun driving during the rainy season)!
- Removal of ninety-three oak trees!
- Building of one unit directly on top of Hialeah Springs, one of the few natural springs in the area!

The 338 acre tract, acknowledged by the state and county to be a significant ecological area (SEA), is destined to go the way of Porter Ranch and Hummingbird Ranch if this developer has his way. And so far, he has had his way!

A Negative Declaration ("no Environmental Impact Report required") was submitted to, and accepted by, the L.A. County Department of Regional Planning. A copy of the Declaration is available for public review at the Newhall county library. How convenient for adjacent property owners and other concerned local citizens!

Although the SSMPA was not notified, the Foundation for the Preservation of the Santa Susanas was notified of a hearing to be held on this matter at the DRP offices in downtown L.A... the notice being mailed two days before the hearing, and received by the Foundation one day before the hearing! Glenn Bailey, president, and Mark Knight attended the hearing as representatives of the Foundation. Todd McCormick and Cynthia Fichtner, of SSMPA, were also in attendance. In addition to the normal cavalier attitude of the DRP toward the public weal, our representatives were not permitted to address the DRP to voice their concerns about the lack of an EIR and the pending rape of our mountains. It seems the Regional Planning Commission was in a hurry to get to lunch, had heard all they wanted to hear, and had made up their minds(?) anyway! To this writer, it sounds more like a public announcement than a public hearing.



Jan Hinkston, founder of the SSMPA, reports that it is our intention to "stand and fight" on this one! An appeal is to be filed asking for an EIR and a moratorium on development until the EIR has been submitted and evaluated. This will cost the SSMPA about \$300 to file, but worth it. Jan has also made an appeal for any attorneys that are SSMPA members to volunteer their services in the event that our appeal is denied.

Jan also reports that the Rancho Simi Park District is forming a task force to draw up a Wildlife Corridor Plan for the Santa Susana Pass. As the Pass is the only narrow corridor for migration between the San Fernando and Simi Valleys, and the proposed development is smack-dab in the center, this is yet another valid reason for a moratorium.

It's going to cost money to join this battle. Now, more than ever, we need membership funds. Please renew your membership and solicit your friends and neighbors to join the SSMPA.

- Doug Wobser

### HOLIDAY ARTS AND CRAFTS FAIR

The SSMPA will have a booth at the Mason Park Fair on Saturday, November 15, 1986. Beautifully decorated Chumash Indian-design note cards will be offered as well as the historical, commemorative sponsor book "Over the Pass, Into the Past". These make excellent holiday gifts.

- Nancy Razansky

(This year we are lucky enough to have booth #4, just inside the door of the Community Center and out of the wind! If you would like to volunteer one hour of your time to man the booth on behalf of SSMPA, please contact Nancy at (818) 341-3512. - ed.)

### DOUBLE ANNIVERSARY CELEBRATION

The public is invited to SSMPA's sixteenth anniversary and the second anniversary of its Visitor Center in Chatsworth Park South. Musical entertainment and a cake-cutting ceremony are planned. This event is scheduled for Sunday, November 16, 1986, from noon to three p.m. at the Visitor Center.

- Nancy Razanski

(Attempts are being made to obtain use of the Community Center gymnasium if bad weather precludes an outdoor celebration. - ed.)

## NEW VIDEO

The SSMPA now has its own sixteen-minute video tape, which can be used for TV programs.

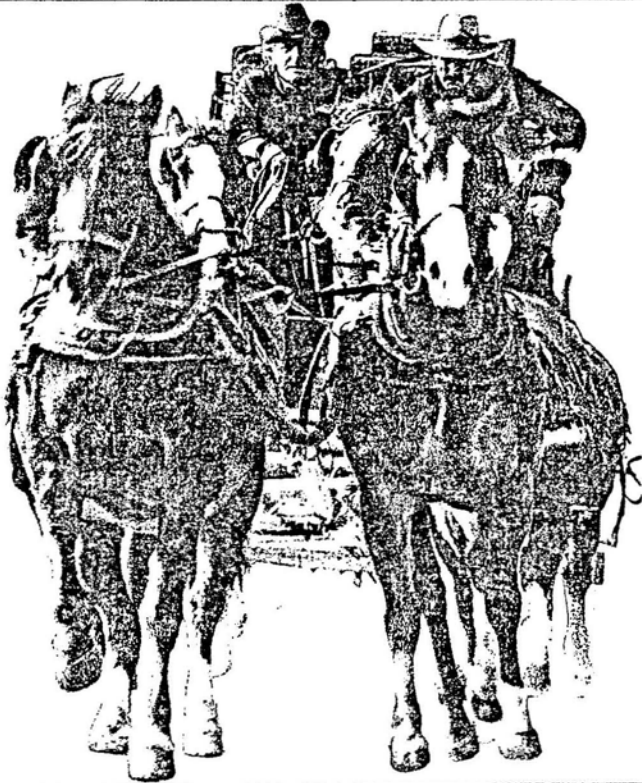
The general public is fortunate to be invited to the first public premier of this video which shows some marvelous scenes of our hills and some of the people who have dedicated themselves to maintaining the scenic splendor for present and future generations of nature enthusiasts, as well as the environmental habitat of wildflowers and animals.

The premier takes place in the Community Room of Glendale Federal Savings and Loan at 21221 Devonshire St. in Chatsworth, which is just two blocks east of Topanga Canyon Bl. The date is Monday, October 20, 1986, at 7:30 p.m.

Admission is free, but memberships (and renewals - ed.) in the SSMPA will be cheerfully accepted. Please plan to attend and get the thrill of your lives seeing your familiar hills captured into a feature performance of their very own.

- Nancy Razanski

(Editor's Note: Having viewed a sneak preview of this video at Canyon Design last month, I was pleasantly surprised and very impressed with it. The video was funded by our grant from the Santa Monica Mountains Conservancy and, in my opinion, we really got our money's worth! It is professional, eye-catching and really drives home the beauty, history and environment of the Santa Susanas and Simi Hills. It also clearly points out the imminent dangers of development and pollution to the area. I cannot recommend too highly that you attend The SSMPA general meeting this Monday and view it for yourselves.)



## JEFF JACOBS, WHERE ARE YOU?

Back in April, you gave the SSMPA Visitor Center an excellent aerial photograph of the Santa Susana Mountains/Simi Hills area... then promptly disappeared! We are very interested in contacting you. Please contact any SSMPA board member (listed elsewhere in this issue) and leave a phone number or mailing address where you can be reached. Oh, by the way, THANK YOU!

## THEY'RE BACK!

On Sunday, October 5th, the Old Stagecoach Trail Hikes resumed after their summer hiatus. If you've not participated in this hike, you're missing one of the best views of the west valley available. The hike is led by Sierra Club Trail Leaders every Sunday (weather permitting) and takes about three hours, getting you back in time for that crucial ballgame or family barbecue. The hike is about four miles, starting and ending at the Chatsworth Park South parking lot adjacent to the SSMPA Visitor Center.

With the exception of a quarter-mile stretch of the Old Stagecoach Trail known as "Devil's Slide", it's more of a "mosey" than a true hike. The pace is leisurely and frequent stops are made to point out historic, environmental or geologic points of interest. Families are welcome and seem to enjoy these stimulating and educational walks. Even the occasional "couch potato" has remarked on the enjoyment of trekking through the Simi Hills on this Sunday morning outing.

The hike departs Chatsworth Park South at nine a.m. and returns around noon. Participants are advised to wear sturdy shoes (no thongs, sandals or high heels) and a hat. It is also recommended that each hiker bring one quart of water and a snack or sack lunch. There are a few isolated patches of poison oak (which will be pointed out by the hike leader) so use your own judgement as to wearing shorts.

I would also like to remind you birdwatchers that the San Fernando Valley Chapter of the Audubon Society leads a bird walk on the second Saturday of each month, also starting and ending at Chatsworth Park South, at 8:30 a.m.

For families (or single parents) with pre-schoolers, there are Nursery Nature Walks on the third Saturday of the month at 8:00 a.m. Geared especially for infants and toddlers, these stimulating and educational walks are led by an experienced guide who is familiar with the exceptional needs of parents hiking with wee people. Older siblings are also welcome. At this curious and inquiring age, babies (and parents) are encouraged to LOOK, LISTEN, SMELL and FEEL their surroundings to gain an appreciation of living creatures and their natural environment.

For further information, call one of the following numbers:  
OLD STAGECOACH TRAIL HIKE ..... (818) 882-4688  
AUDUBON SOCIETY BIRDWALK ..... (818) 885-1347  
NURSERY NATURE WALK ..... (818) 365-3231

- Doug Wobser

## PLEA FOR ESTABLISHMENT OF HISTORIC PARK

In a joint effort by the Foundation for the Preservation of the Santa Susanas and the Santa Susana Mountain Park Association, a resolution has been drafted requesting that a large portion of the land in and around the Santa Susana Pass be set aside as a State Historic Park to commemorate the abundant history, both natural and man-made, of the area.

As soon as an accompanying map is completed, the SSMPA/FFTPOTSS intends to request endorsement of the resolution by other concerned organizations and submit the resolution to various governmental agencies.

A complete text of the resolution appears on the next page.

## SUPER 8 MOVIE EQUIPMENT FOR SALE

The SSMPA has a Canon 1014XL-S movie camera, heavy-duty tripod and a Super 8 projector for sale. Anyone interested in these items please contact Jan Hinkston at (818) 884-9610. We need to convert them to cash for our ongoing expenses in the fight to save the Santa Susanas.

## RESOLUTION

proposing the establishment of a  
SANTA SUSANA STATE HISTORIC PARK

WHEREAS, there are probably few nations in the world whose citizens have not seen motion pictures of the Santa Susana Pass (images of the Lone Ranger on his great horse Silver or Humphrey Bogart greedily climbing the "Sierra Madre" are embedded in the memories of people everywhere, and are part of California's unique contribution to the world of entertainment); and

WHEREAS, hundreds of motion pictures have been filmed in the area since the early part of this century and continue to be filmed today, as are television series and commercials; and

WHEREAS, the preservation of this important film making area would ensure the continued usefulness of the Pass for future filming operations and would be a valuable part of the State of California's effort to encourage the entertainment industry to remain within California; and

WHEREAS, The Santa Susana Pass is unsurpassed in its potential as an entertainment industry landmark and living museum; and

WHEREAS, The Santa Susana Pass is a crossroads of California history, serving as a path between Northern and Southern California, a meeting place two major Indian cultures and part of the route of the first Spanish explorers to visit California; and

WHEREAS, remnants of six of the seven historic eras of transportation to use the Pass may still be seen, i.e.: the mission footpath, the stagecoach trail, the wagon road, the railroad, the Pass Road and the Simi Valley-San Fernando Valley (118) Freeway; and

WHEREAS, lacking protection of the only viable wildlife route under the 118 Freeway, the Santa Monica Mountains and the Simi Hills would experience biological isolation from the Santa Susana Mountains; and

WHEREAS, the proposed park would provide habitat for some species of endangered and rare plant and animal life; and

WHEREAS, the unique geology of sandstone outcroppings (known as the Chico Formation) is an important part of the scenic landscape of the San Fernando and Simi Valleys, and epitomizes for the world the landscape of the Old West; and

WHEREAS, the proposed park is located amidst three of the most rapidly growing areas in California (the Santa Clarita, San Fernando and Simi Valleys) and would provide nearby outdoor natural recreation opportunities; and

WHEREAS, the proposed park would be an essential link in the Rim of the Valley Trail System; and

WHEREAS, the proposed acreage is adjacent to four hundred and twenty-eight acres already owned by the State for park purposes (but not yet dedicated as such) which requires more acreage to meet State standards; and

WHEREAS, portions of the park are threatened by imminent development;

NOW THEREFORE, BE IT RESOLVED that a Santa Susana State Historic Park be established in accordance with the special provisions set forth as follows:

- a. The boundaries of the proposed park should be as delineated on the accompanying map.
- b. A museum, dedicated to the history of film making, should be constructed within the confines of the proposed park. Preferably, such a facility would recreate a "western" movie set and include displays of historic and natural features of the area

## FAREWELL AND THANKS, WARD AND DANA

Ward and Dana Barney, active SSMPA members are moving to Irvine. Dana, a hike leader/docent, was instrumental in getting the Nursery Nature Walks started at Chatsworth Park South and is a past member of the SSMPA Board of Directors. Ward donated much time and effort in helping build and wire the new projector cabinet in the visitor center. We wish them well in their new home and job and want them to know they will be missed. Good luck and our grateful thanks go with you.

## THANKS, ED

We also would like to extend our thanks to Ed Tabor, who took time from his active schedule as a Board Member of both the SSMPA and the San Fernando Valley Group of the Sierra Club to install the locks in the overhead storage cabinets of the visitor center. Well done, Ed!

## CONGRATULATIONS IN ORDER

A gold star to June Hopkins, second Sunday Invitation to Explore Hike Leader, for having been awarded her Sierra Club "I" Leader Rating. The Sierra Club doesn't hand out "I" ratings for showing up at meetings, you've gotta earn 'em! Way to go, June!!!

## OFFICE EQUIPMENT, FURNITURE NEEDED

Jan Hinkston has asked that anyone having surplus or extra office furniture or equipment they are willing to donate please call her at (818) 884-9610. Desparately needed are a correcting typewriter, desk and a two-drawer file cabinet. Other items such as trays, supplies, implements, etc. will also be gratefully accepted. Remember, all such donations are tax-deductable to the extent allowed by law!



- c. Commercial film making operations within the proposed park should be encouraged, to maintain the Pass and the metropolitan Los Angeles area as an important cinematic center.
- d. A system of trails and markers should be established to provide access to, and identify, important historical and natural areas.
- e. Existing wildlife routes should be researched and a Wildlife Corridor Plan created and implemented.
- f. All park operations should be conducted with the least possible disturbance to historic, archaeological, paleontologic, geologic and ecologic elements

SANTA SUSANA MOUNTAIN PARK ASSOCIATION BOARD OF DIRECTORS

President —	Doug Wobser	21025 Lassen St #119, Chatsworth 91311	(818) 882-4688
Vice President —	Sylvia Bryant	9901 Lurline Av #125, Chatsworth 91311	(818) 341-5820
Secretary —	Linda Stone	11416 Cree Trail, Chatsworth 91311	(818) 998-3196
Treasurer —	Pauline Aue	11417 Cree Trail, Chatsworth 91311	(818) 341-5872
Founder —	Jan Hinkston	8657 Valley Flores Dr, Canoga Park 91304	(818) 884-9610
Member-at-Large —	Barbara Coffman	8611 Eatough Av, Canoga Park 91304	(818) 347-5603
Member-at-Large —	Dan Cooper	9565 Reseda Bl, Northridge 91324	(818) 882-7925
Member-at-Large —	Pat Levin	10010-3 Larwin Av, Chatsworth 91311	(818) 998-3391
Member-at-Large —	Nancy Razanski	22149 James Allen Circle, Chatsworth 91311	(818) 341-3512
Member-at-Large —	Ed Tabor	7240 Shirley Av, Reseda 91335	(818) 349-8037

The board meets at 7:30pm on the first Monday of each month at the home of Jan Hinkston.  
Any SSMPA member is welcome to attend the meeting to observe the proceedings and/or be heard.

---

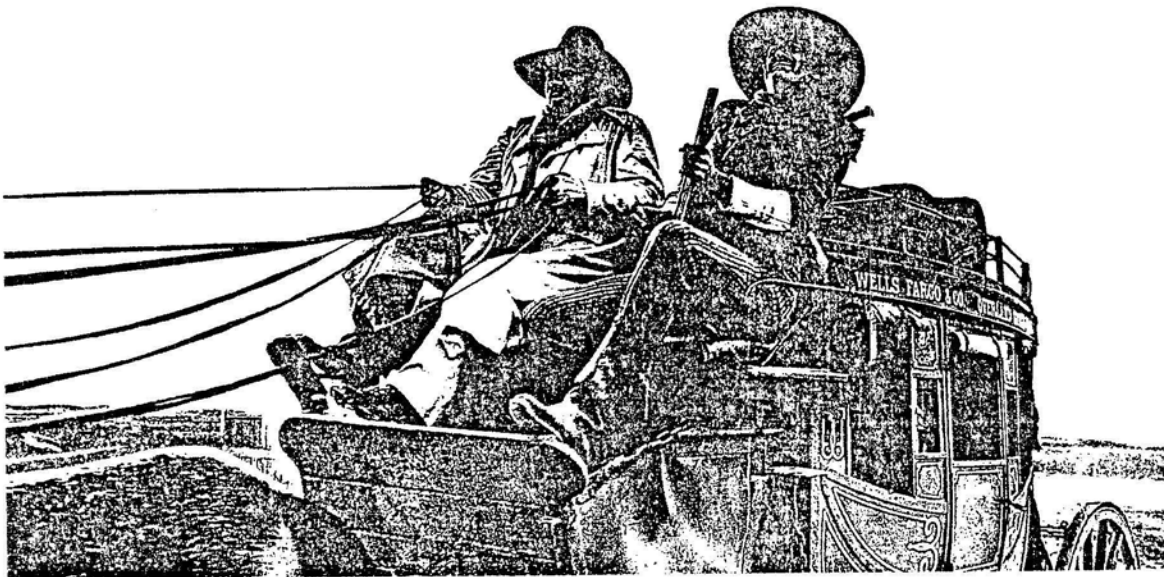
SSMPA GENERAL MEETING DATES  
(third Monday at 7:30 pm,  
Glendale Savings & Loan, Chatsworth)

October 20, 1986

November 17, 1986

December 15, 1986

January 20, 1987



The date on your mailing label indicates when your membership expires. Members whose dates are prior to 86-11 (Nov 86) are requested to renew at this time. Thank you.

ENCLOSED ARE MY ANNUAL DUES FOR (check one):  RENEWAL  NEW MEMBERSHIP

CATEGORY (check one):  INDIVIDUAL (\$10)  FAMILY (\$15)  STUDENT or SENIOR (\$5)  
 SUPPORTING (\$25)  BUSINESS (\$25)  LIFE MEMBER (\$100)

NAME \_\_\_\_\_ TELEPHONE \_\_\_\_\_

ADDRESS \_\_\_\_\_ CITY/ZIP \_\_\_\_\_

I am interested in participating on the following committees or helping in the following ways:

- |  |   |
|--|---|
| <input type="checkbox"/> ART WORK (Do art work and/or lettering on posters, displays, etc.)                | <input type="checkbox"/> BOOTHS, INFORMATION TABLES (At fairs, shopping malls, etc.)                                      |
| <input type="checkbox"/> DOCENT (SSMPA Visitor Center, 3 hrs/mo.)  | <input type="checkbox"/> HIKE LEADER (Requires Sierra Club "O" Rating.)   |
| <input type="checkbox"/> HOSPITALITY (Greet people at meetings.)   | <input type="checkbox"/> MEMBERSHIP (Contact new, potential or expired members; help keep membership records.)            |
| <input type="checkbox"/> PHOTOGRAPHY (Nature, events, meetings, news releases, etc.)                       | <input type="checkbox"/> HISTORY (Assist SSMPA Historian in maintaining records, scrapbooks, awards, etc.)                |
| <input type="checkbox"/> PUBLICITY (Write and mail press releases on meetings, events, outings, etc.)      | <input type="checkbox"/> PUBLICATIONS (Assist with writing, typing, composing, printing and/or mailing newsletter.)       |
| <input type="checkbox"/> PROGRAMS (Help plan programs; suggest program subjects.)                          | <input type="checkbox"/> PHONE COMMITTEE (Contact members by phone for special events, meetings, etc.)                    |
| <input type="checkbox"/> SPEAKING (Either at SSMPA meetings or on behalf of SSMPA to other organizations.) | <input type="checkbox"/> CORRESPONDENCE (Writing letters to legislators, government officials, other organizations, etc.) |
| <input type="checkbox"/> OTHER (Describe) _____  |   |

What sort of programs, meetings, social events, publications and information interest you the most?

\_\_\_\_\_

\_\_\_\_\_

What is your occupation? \_\_\_\_\_

What are your hobbies? \_\_\_\_\_

\_\_\_\_\_

If new member, how did you hear of SSMPA? \_\_\_\_\_

Please complete and return this entire form, with check made payable to SSMPA, to: **Santa Susana Mountain Park Association**  
P.O. Box 4831  
Chatsworth, California 91313-4831

PLEASE DO NOT SEND CASH!