



FOUNDATION FOR THE PRESERVATION OF THE SANTA SUSANA MOUNTAINS

P.O. Box 831 --Chatsworth, CA 91311

OCTOBER 1980

TRAIL TIDINGS

BILL SCOTT, EDITOR

10th ANNIVERSARY, BICENTENNIAL
EVENT SET FOR NOVEMBER 17

A slide show on the Stage Coach trail will be part of the November 17 meeting of SSMPA at the Glendale Federal Savings Community Room, 21821 Devonshire St., Chatsworth at 8. m.

The 10th Anniversary of the founding of the Association will be celebrated. It will be the Bicentennial event of the Association.

Cake and other refreshments will be served.

WRITE TO SAVE STAGE COACH TRAIL

Letters to Peter Dangermond, the new State Parks Director, are needed to ask that the priority be raised on the purchase of the Stage Coach Trail, which is threatened with development.

Another request is for the development of the corridor park concept. This concept calls for trails around developments so that hikers and horsemen can reach historical and scenic points.

NLARCD APPROVES \$3000,000 FOR WEBSTER
PURCHASE, SUPERVISORS MUST CONSENT

The Northwestern Los Angeles Resource Conservation District has approved \$3000,000 for purchase of the Webster Property near the upper end of the Stage Coach Trail. The funds are to come from Special District Augmentation Funds. Approval of the Board of Supervisors is required for their use.

Letters and calls to Baxter Ward and other Supervisors should speed the process..

SSMPA has been negotiating for purchase of the property but has so far been unsuccessful.

CLUSTERING AND STONEY POINT ARE
SSMPA PRIORITIES IN CITY AREAS

A request for the City to redo the Environmental Impact Report on the Palmer property at the lower end of the Stage Coach Trail is made By Janice Hinkston, SSMPA President. She says the EIR is not up to date with recent plans.

The houses should be clustered away from the Historical features such as the Indian Pictographs and the Quarry where rock was quarried for the breakwater at Los Angeles Harbor, she added, and should be screened from Chatsworth Park.

The second concern is for continued action toward purchasing Stoney Point as a park.

PARKLANDS MEASURE AGAIN ON BALLOT

A revised Parklands Measure is on the ballot for the November 4 election. It has been simplified from the measure which failed in the Primary.

Local Parks and Recreation are provided for with \$85 million. Distribution is to be on the basis of population by local decision.

Urban Parks and Recreation are

(Continued on p. 2)

PARKS MEASURE (Cont. from p. 1)

provided \$30 million for open space and recreation grants and to buy and construct new projects in major metropolitan areas.

The State Park System is provided \$70 million to buy and develop new parks, to add new campsites, trails, rest rooms, and parking at older parks and to buy and prepare historical sites for use.

Coastal Resources are provided \$90 million for projects on or near the coast: to buy Coastal Property for the State Park System, to buy and develop beaches for city and county, for projects on San Francisco Bay and in the Santa Monica Mountains and to implement local coastal programs.

Beach Access and Coastal Enhancement is provided \$10 million for grants to state and local agencies and for State Coastal Conservancy projects, to buy and develop new public trails to the beaches and to restore and enhance marshes, lagoons, dunes, and other coastal resources.

This new Proposition One will be financed by general obligation bonds. The Department of Finance estimates the total cost of the bond authorization at \$509,437,500 (7½ % interest and 20 year maturity). This amounts to about \$1.17 per person annually or less than a dime a month.

FOUNDATION FOR THE PRESERVATION OF
THE SANTA SUSANA MOUNTAINS
P.O. Box 831
Chatsworth, CA 91311

SSMPA MEMBERS CANDIDATES FOR NLRCD

Four SSMPA members are candidates for the Northwestern Los Angeles Resource Conservation District.

Jan Hinkston and Steve Fox are currently serving as Directors and Bill Scott is an Associate. Glenn Bailey, President of the District is a write-in Candidate.

The District includes the western part of the San Fernando Valley, the Santa Clarita Valley, and part of Santa Catalina Island.

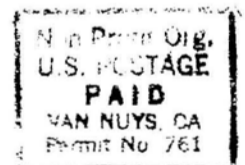
HIKING PROGRAM CONTINUES

The SSMPA series of monthly hikes continues.

There is a family hike on the second Sunday of the month to various areas. It starts from the parking lot at the NW corner of Topanga and Devonshire at 9 a.m. Bill Scott and Jan Hinkston are leaders.

A nature-history walk is scheduled for the fourth Saturday. It starts from the Rocky Peak offramp from the Simi Valley Freeway, also at 9.a.m. Jan Hinkston leads and a Naturalist assists.

She also leads a hike on the fourth Sunday which starts at the same time and place as the second Sunday hike. Additional information is available from the leaders at 998-7231 or 885-8479.



Nancy Razanski
22149 James Alan Circle
Chatsworth, Calif. 91311